

ALTIBASE® HDB™ Application Development

Windows ODBC Driver Installer User's Guide

Release 6.5.1.

May 28, 2015



ALTIBASE HDB Application Development Windows ODBC Driver Installer User's Guide

Release 6.5.1.

Copyright © 2001~2015 Altibase Corporation. All rights reserved.

This manual contains proprietary information of Altibase® Corporation; it is provided under a license agreement containing restrictions on use and disclosure and is also protected by copyright patent and other intellectual property law. Reverse engineering of the software is prohibited.

All trademarks, registered or otherwise, are the property of their respective owners

Altibase Corporation

10F, Daerung PostTower II, 182-13,

Guro-dong Guro-gu Seoul, 152-847, South Korea

Telephone: +82-2-2082-1000 Fax: 82-2-2082-1099

Homepage: <http://www.altibase.com>

Contents

Preface	v
About This Manual	vi
Audience.....	vi
Software Environment.....	vi
Organization.....	vi
Documentation Conventions	vi
On-line Manuals	vii
Altibase Welcomes Your Comments	vii
1. Overview	1
1.1 Introduction.....	2
1.1.1 Software Version	2
1.1.2 Installer Name	2
1.2 Features.....	3
1.2.1 Installation Check.....	3
1.2.2 32/64 bit Platform Consideration.....	3
1.2.3 Duplicated ODBC Driver File Installation	3
2. Installation.....	5
2.1 Preparation	6
2.1.1 System Requirements	6
2.1.2 Download Site.....	6
2.2 Installation.....	7
2.2.1 Starting Installer	7
2.2.2 Specifying Installation Directory	8
2.2.3 Overwriting Previous Installation.....	9
2.2.4 Installing.....	10
2.2.5 Updating Registry	10
2.2.6 Copying Files	10
2.2.7 Installation Completed	11
3. Uninstallation.....	13
3.1 Uninstallation	14
3.1.1 Starting Uninstaller	14
3.1.2 Check Installation Status	15
3.1.3 Updating Registry	15
3.1.4 Removing altiodbc.dll File	15
3.1.5 Removing Installation Directory.....	15
3.1.6 Uninstallation Completed.....	16

Preface

About This Manual

This manual describes how to install and configure the ALTIBASE HDB ODBC Driver on Microsoft Windows platforms.

Audience

This manual has been prepared for the following ALTIBASE HDB users:

- database managers
- performance managers
- database users
- application developers
- technical support workers

It is recommended that those reading this manual possess the following background knowledge:

- basic knowledge in the use of computers, operating systems, and operating system utilities
- experience in using relational databases and an understanding of database concepts
- computer programming experience
- experience in database server, operating system or network administration

Software Environment

This manual has been prepared assuming that ALTIBASE HDB 6 is used as the database server.

Organization

This manual is organized as follows:

- [Chapter1: Overview](#)
- [Chapter2: Installation](#)
- [Chapter3: Uninstallation](#)
- [Appendix A. FAQ](#)

Documentation Conventions

This section describes the conventions used in this manual. Understanding these conventions will make it easier to find information in this manual and other manuals in the series.

Rules	Meaning
<i>Italic</i>	Indicates book title, emphasis, or placeholder variables for which particular values are supplied by user.
<code>monospace</code>	Indicates commands within a paragraph, code in examples, etc.

On-line Manuals

Online versions of our manuals (PDF or HTML) are available from Altibase's Customer Support site(<http://support.altibase.com/>).

Altibase Welcomes Your Comments

Please let us know what you like or dislike about our manuals. To help us with future versions of our manuals, please tell us about any corrections or classifications that you would find useful.

Include the following information :

- The name and version of the manual that you are using
- Any comments that you have about the manual
- Your name, address, and phone number

When you need an immediate assistance regarding technical issues, please contact Altibase's Customer Support site(<http://support.altibase.com/>).

Thank you. We appreciate your feedback and suggestions.

1 Overview

ALTIBASE HDB ODBC Driver Installer is a java-based installer which helps users install ALTIBASE HDB ODBC Driver easily. This chapter introduces ALTIBASE HDB ODBC Installer and its features.

1.1 Introduction

ALTIBASE HDB ODBC Driver Installer, which is provided separately from product package, lets users install and uninstall ALTIBASE HDB ODBC Driver on Windows platform.

Manually installing ALTIBASE HDB ODBC Driver for Windows platform used to be troublesome if users didn't choose to install it during ALTIBASE HDB installation. Users need to edit Windows registry by themselves, or have to reinstall ALTIBASE HDB with ODBC Driver.

Now it became easy to install or uninstall ALTIBASE ODBC Driver independently with this installer.

1.1.1 Software Version

ALTIBASE HDB ODB Driver Installer for Windows platform is provided for ALTIBASE HDB 5.5.1 and later version.

1.1.2 Installer Name

The name of ALTIBASE HDB ODBC Driver Installer is follows the name convention of ALTIBASE Package Installer.

ex) `altibase-ODBC-6.1.1.0.2-WINDOWS-X86-64bit-release.exe`

1.2 Features

This section lists some considerations to keep in mind when using ALTIBASE HDB ODBC Driver Installer.

1.2.1 Installation Check

ALTIBASE HDB ODBC Driver Installer does not add itself under START menu. Instead, users can execute it by navigating 'Control Panel ' Add/Remove Programs' after installation. Later, users can uninstall ALTIBASE ODBC Driver file with this installer.

1.2.2 32/64 bit Platform Consideration

It is generally safe to install ALTIBASE HDB ODBC Driver having the same bit as the Windows OS. Please consider followings:

- It is not possible to use 64-bit ALTIBASE HDB ODBC Driver on 32-bit Windows platform.
- After 32-bit ALTIBASE HDB ODBC Driver is installed on 64-bit Windows, the ODBC driver file (altiodbc.dll) can be found in the C:\Windows\SysWOW64 system folder instead of C:\Windows\System32, and this path will be written in the Windows registry.

1.2.3 Duplicated ODBC Driver File Installation

If ALTIBASE HDB Package Installer and HDB ODBC Driver Installer are used separately for ODBC Driver installation, duplicated ALTIBASE HDB ODBC Drivers can be installed. In this case, it is possible to uninstall ALTIBASE HDB ODBC Driver using either ALTIBASE HDB Package Uninstaller or ODBC Driver Uninstaller.

If ODBC Driver was installed during ALTIBASE HDB package installation, and again installed with ODBC Driver Installer, it can be uninstalled by ODBC Driver Installer. Users can still use ALTIBASE HDB, but not ODBC Driver anymore.

However, after ALTIBASE HDB was installed with ODBC Driver using ALTIBASE Package Installer and ALTIBASE HDB ODBC Driver Installer overwrites the old file with the file comes from ALTIBASE HDB ODBC Driver Installer. If users uninstall ALTIBASE HDB using ALTIBASE HDB Package Uninstaller, ODBC Driver will be removed as well as ALTIBASE HDB package. In this case, only ALTIBASE ODBC Driver Uninstaller will be left.

1.2 Features

2 Installation

This chapter shows the overall process of installing ODBC Driver by ALTIBASE HDB ODBC Driver Installer.

2.1 Preparation

This section list system requirements and homepage that you can download the installer.

2.1.1 System Requirements

The followings are the minimum system requirements for running ALTIBASE HDB client applications.

2.1.1.1 Main Memory

32-bit OS: minimum 512 MB or more (recommendation: 1 GB or more, maximum: 4 GB)

64-bit OS: minimum 512 MB or more (recommendation: 1 GB or more, ,maximum: unlimited)

2.1.1.2 CPU

CPU having 1 or more cores.

2.1.1.3 Operating System

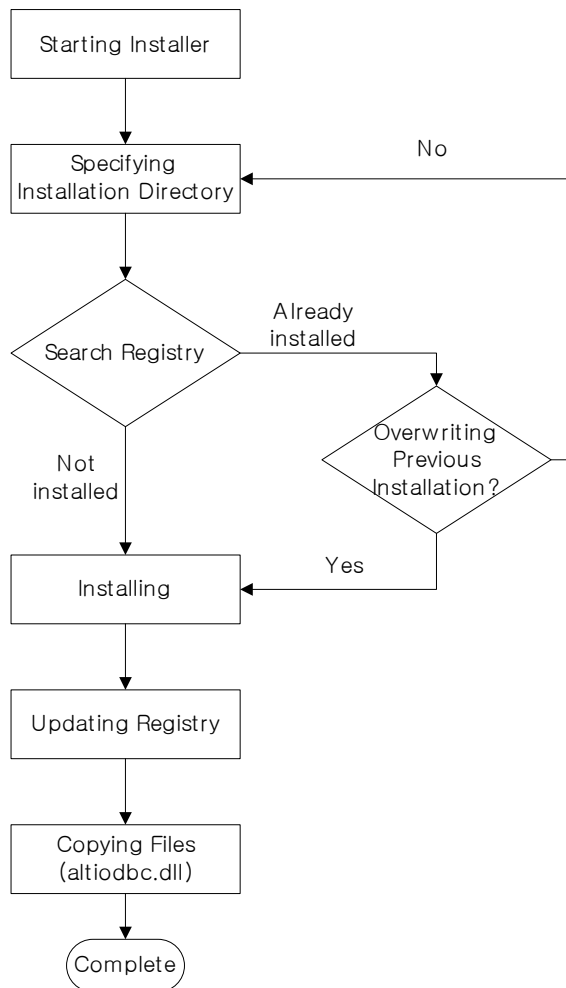
Microsoft Windows XP or higher version of Microsoft Windows.

2.1.2 Download Site

This ALTIBASE HDB ODBC Driver Installer can be downloaded from Altibase's Customer Support site (<http://support.altibase.com>).

2.2 Installation

Following figure shows general flow of ALTIBASE HDB ODBC Driver installation.



2.2.1 Starting Installer

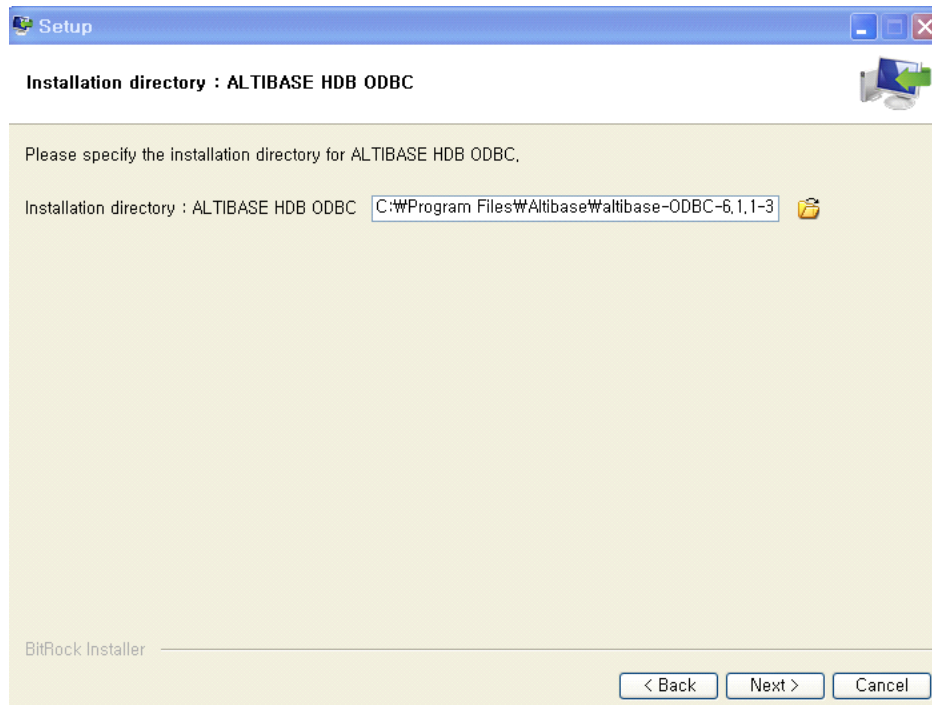
Following windows appears when starting ALTIBASE HDB ODBC Driver Installer.

2.2 Installation



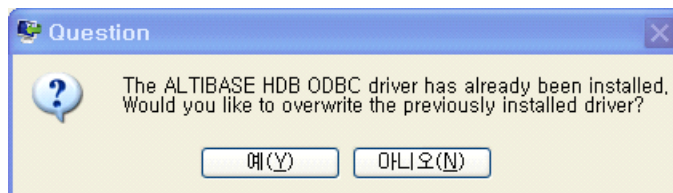
2.2.2 Specifying Installation Directory

Following window asks users to enter the installation directory where ALTIBASE HDB ODBC Driver file (altiodbc.dll) and Uninstaller execution file will be installed. For 64-bit Installer, the default installation directory is C:\Program Files\Altibase\altibase-ODBC-6.1.1-64bit, and for 32-bit Installer, the default installation directory is C:\Program Files\Altibase\altibase-ODBC-6.1.1-32bit.

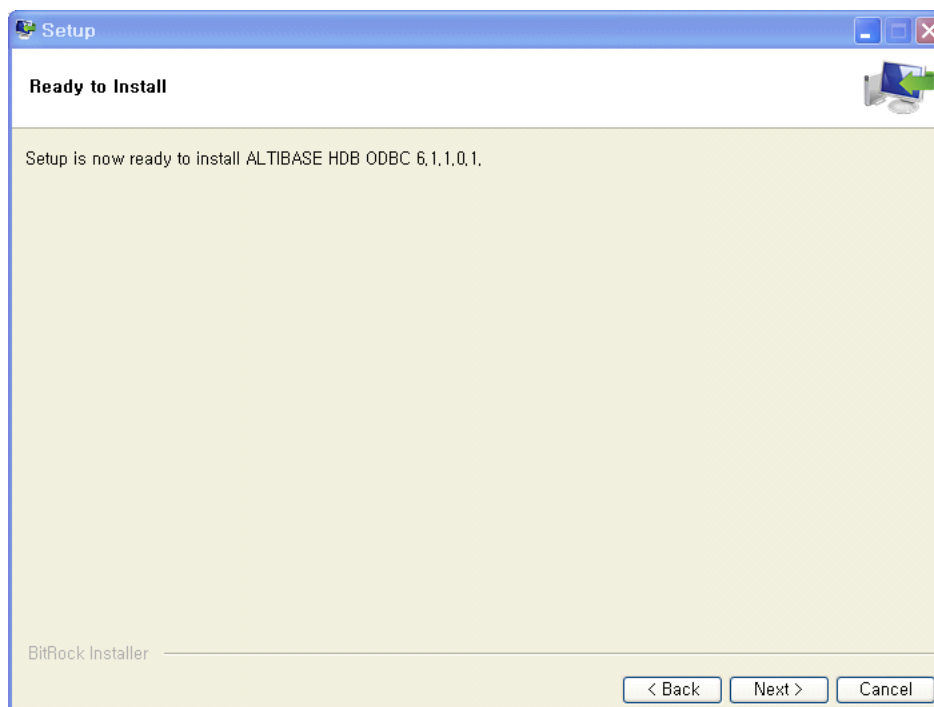


2.2.3 Overwriting Previous Installation

After entering the installation directory, if 'Next' button is clicked, the Installer searches for the information of ALTIBASE HDB ODBC Driver in the Windows registry in order to check whether it has already been installed. If the information of ALTIBASE HDB ODBC Driver found in the registry, following message window will ask you whether to overwrite the previous ODBC driver, as shown below:



2.2 Installation



2.2.4 Installing

Clicking 'Next' button in the following windows will start actual installation. The installer copies ALTI-BASE HDB ODBC Driver file `altiodbc.dll`, and the uninstaller to the installation directory previously specified by users

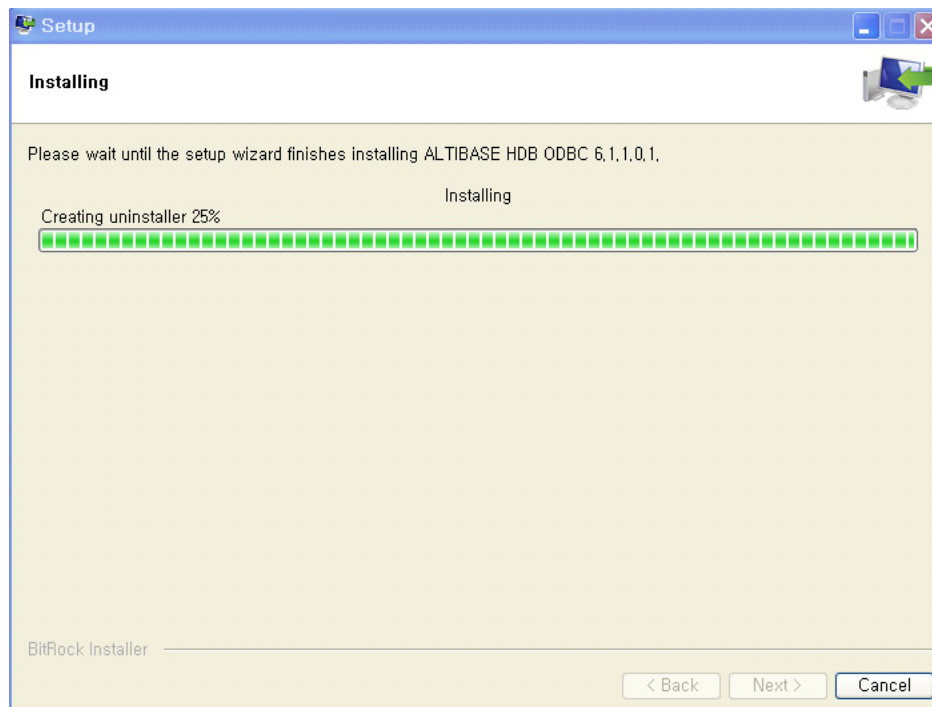
2.2.5 Updating Registry

It, then, adds information about ALTIBASE HDB ODBC Driver to Windows registry.

2.2.6 Copying Files

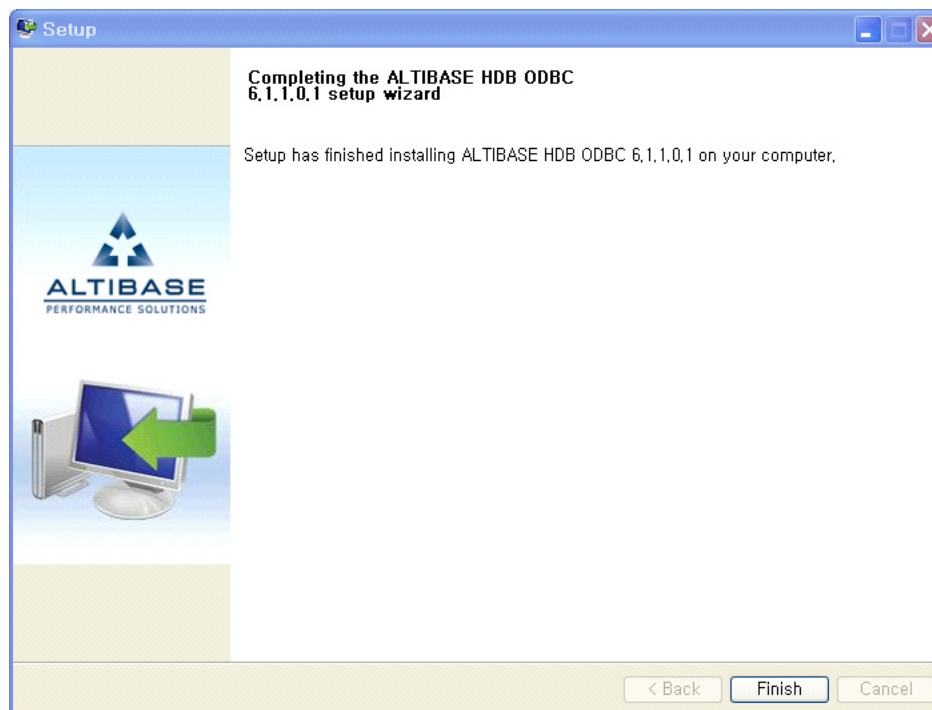
In this step, ALTIBASE HDB ODBC Driver file, `altiodbc.dll`, in the installation directory is copied to the system folder. Two different default system folders are used as follows:

- `C:\Windows\System32`: when using the Installer having the same bit as the Window OS
- `C:\Windows\SysWOW64`: when using the 32-bit Installer on 64-bit Windows OS



2.2.7 Installation Completed

Following window appears when the installation completes.



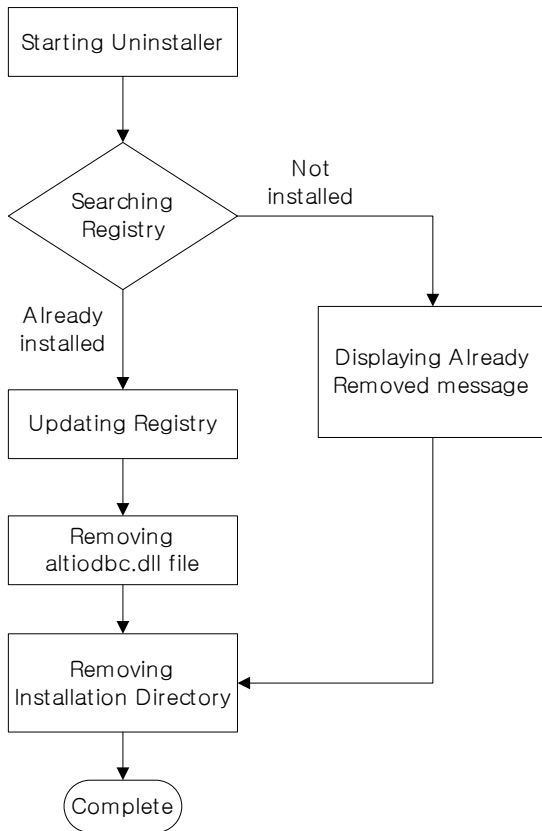
2.2 Installation

3 Uninstallation

This chapter discusses the overall process of removing ALTIBAE HDB ODBC Driver.

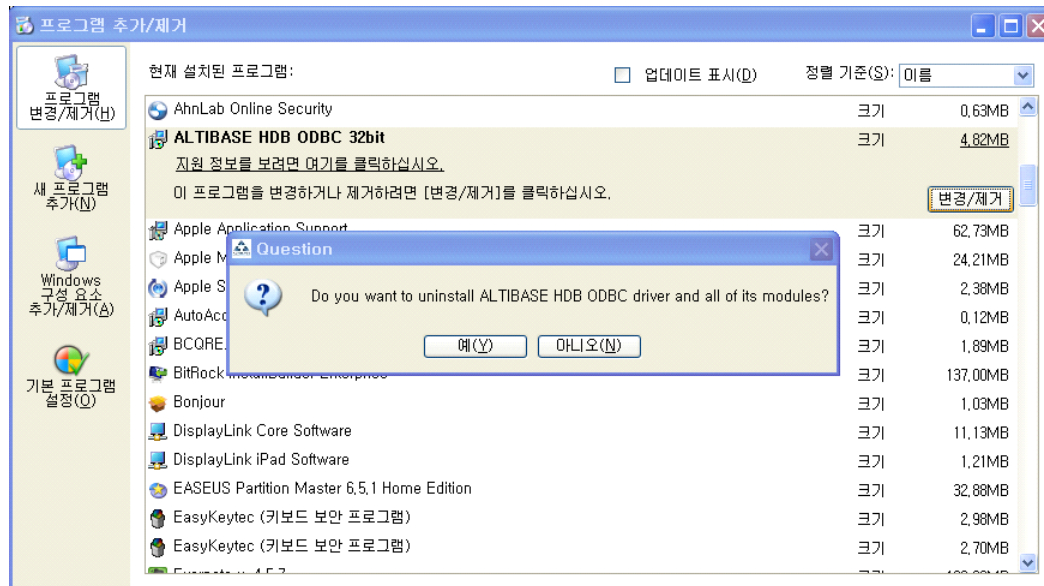
3.1 Uninstallation

Following figure shows general flow of ALTIBASE HDB ODBC Driver uninstallation.



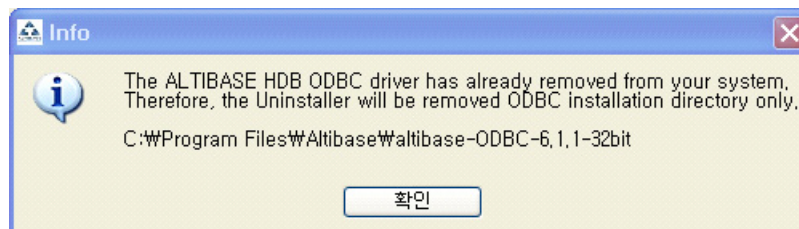
3.1.1 Starting Uninstaller

Uninstaller can be started by clicking the 'Remove' button in 'Control Panel > Add/Remove Programs', as shown in following figure.



3.1.2 Check Installation Status

Uninstaller searches for the installation information of ALTIBASE HDB ODBC Driver in the Windows registry. If it cannot find the information, following message window will show up to inform users.



3.1.3 Updating Registry

If the information of ALTIBASE HDB ODBC Driver exists in the registry, the uninstaller removes the information from the registry.

3.1.4 Removing altiodbc.dll File

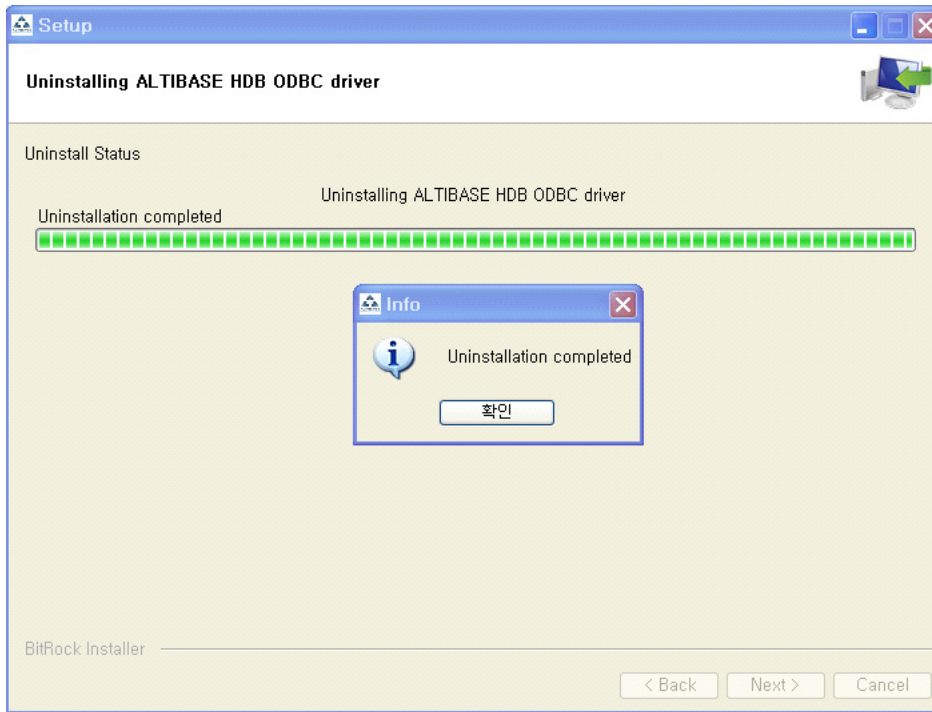
In the next step, the uninstaller removes the ALTIBASE HDB ODBC Driver 'altiodbc.dll' from Windows system folder.

3.1.5 Removing Installation Directory

The uninstaller removes the ALTIBASE HDB ODBC Driver installation directory.

3.1 Uninstallation

3.1.6 Uninstallation Completed



Appendix A. FAQ

This appendix answers some frequently asked questions for using ALTIBASE HDB ODBC Driver Installer.

FAQ

Question 1

I want to upgrade or patch existing ALTIBASE HDB package. I found ALTIBASE HDB ODBC Driver installed. Should I install additional ODBC driver with it?

Answer 1

It is possible to install ALTIBASE HDB package along with its ODBC driver. If you use the Full Package Installer instead of the Patch Installer, you can choose whether to install the ALTIBASE HDB ODBC Driver. ALTIBASE HDB ODBC Driver Installer is provided just in case users install only HDB except ODBC. You can install only ODBC using ALTIBASE HDB ODBC Driver Installer without reinstalling HDB.

Question 2

While I was upgrading ALTIBASE HDB, the installer asks me whether to install ODBC Driver. In old times, I installed ODBC using ALTIBASE ODBC Installer. What should I do?

Answer 2

You may want to install ODBC driver having the different version as the version of HDB when you install ODBC additionally. Therefore, it is recommended to install ODBC with HDB after uninstalling the previous ODBC in the system. (If ODBC is installed using HDB Installer without uninstalling the previous ODBC in the system, new ODBC information overwrites the old one.)

Question 3

I want to install ALTIBASE HDB. What is ODBC Installer? Do I have to install ALTIBASE ODBC using ODBC Installer?

Answer 3

You can install ALTIBASE HDB and its ODBC driver together when ALTIBASE HDB is installed. ODBC Driver Installer is provided just in case users install only ALTIBASE HDB except ODBC driver. You can install only ODBC driver using ODBC Driver Installer without reinstalling ALTIBASE HDB.

Question 4

I want to remove ALTIBASE HDB. What should I do for ODBC driver installed using ODBC Driver Installer?

Answer 4

If you installed ODBC driver with ALTIBASE HDB Installer, then ALTIBASE HDB Uninstaller removes both ODBC driver file and ODBC information from the Windows registry. In this case, ODBC Driver uninstaller might be left in the installation directory that is created by ODBC Installer. This file can be removed by using ODBC Uninstaller or 'Control Panel > Add/Remove Programs'.

Question 5

I want to remove only ALTIBASE HDB ODBC driver. Can I remove the ODBC driver without removing ALTIBASE HDB?

Answer 5

In case where ODBC driver was installed using ODBC Installer, it is possible to remove only ODBC driver using ODBC Uninstaller that is created when ODBC is installed. However, in case where ODBC driver was installed using ALTIBASE HDB Installer, it is not possible to remove only ODBC driver.

Index

D

Download 6
Duplicated ODBC Driver File Installation 3

F

FAQ 17
Features 3

I

Installation 7
Installation Check 3
Installation Directory 8
Installer Name 2
Introduction 2

P

Platform Consideration 3
Preparation 6

R

Registry 10, 15

S

Software Version 2
Starting Installer 7
Starting Uninstaller 14
System Requirements 6

U

Uninstallation 14